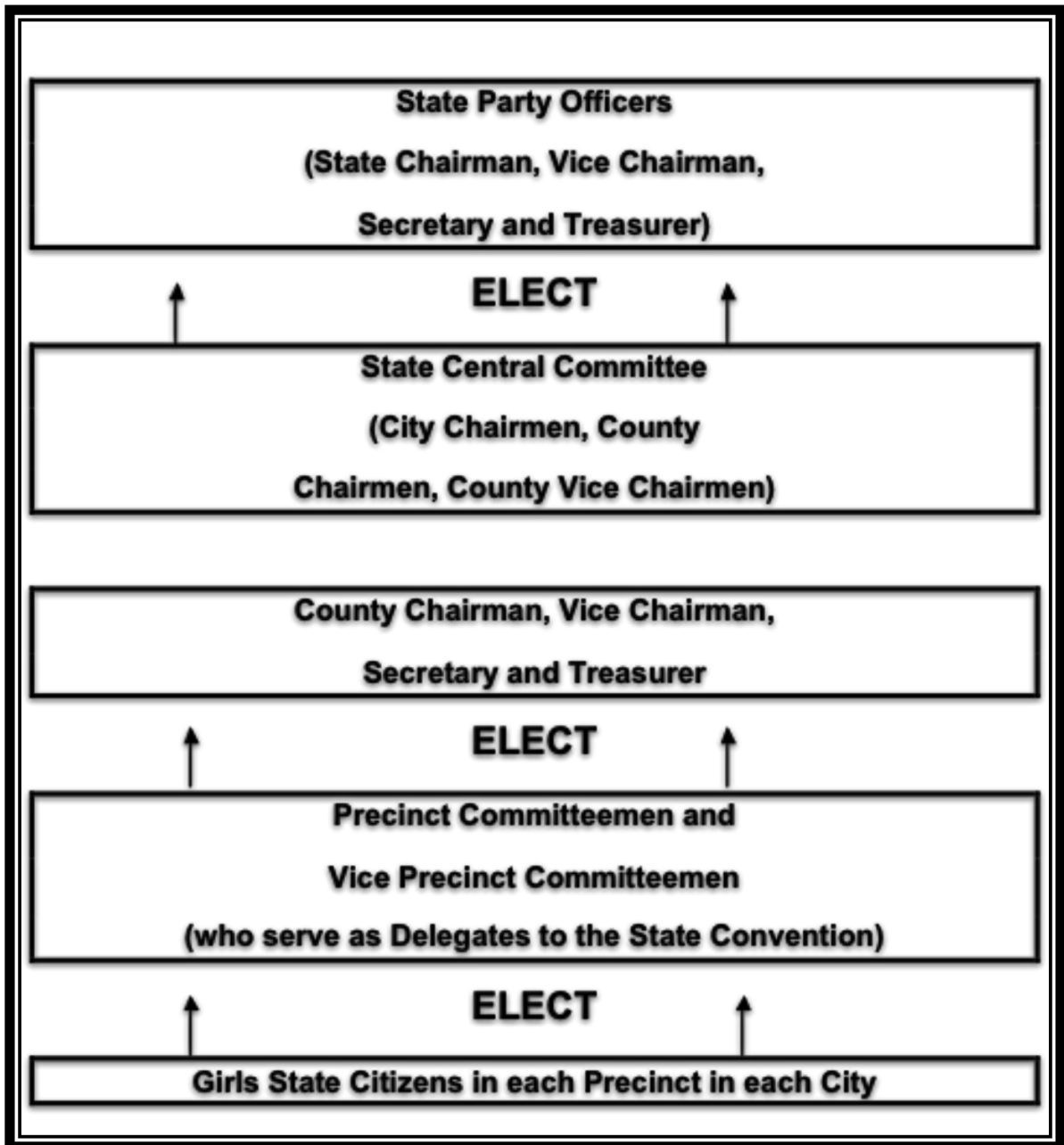


ALA HGS Political Party Structure

| | |
|--|--|
| Step 1: All Voters in Each Party in each Precinct (1 or 2 Precincts per City) | Elect: 1 Precinct Committeeman 1 Vice-Precinct Committeeman |
| Step 2: All Voters in Each Party in each city | Elect: 1 City Chairman 1 City Vice-Chairman |
| Step 3: The Precinct Committeemen and Vice-Precinct Committeemen in each Party in each County | Elect: 1 County Chairman 1 County Vice-Chairman 1 County Secretary 1 County Treasurer |
| Step 4: The 7 County Chairmen 7 County Vice-Chairmen and the 17 City Chairmen in each party | Elect: 1 State Party Chairman 1 State Party Vice-Chairman 1 State Party Secretary 1 State Party Treasurer |

****Read the following information from the bottom up.**



NOTE: City Chairmen and City Vice-Chairmen are elected by all citizens in each City.